



# Our Prospectus



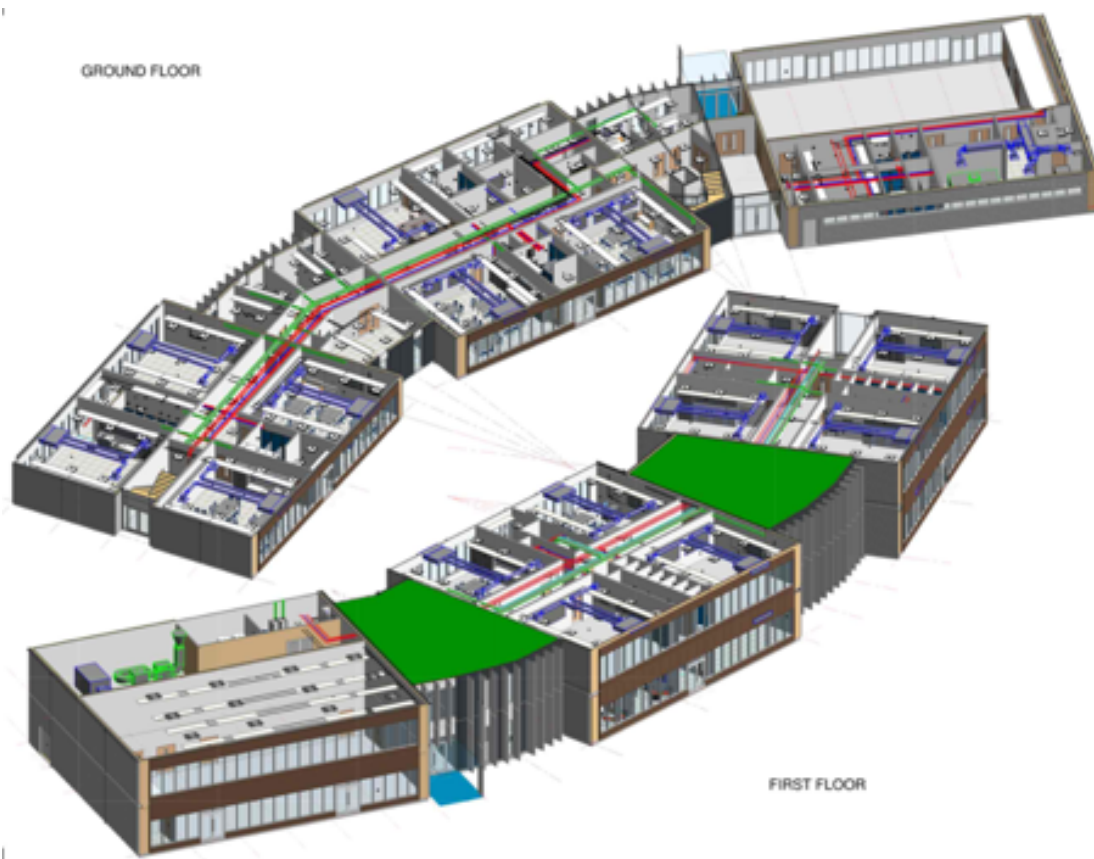
# Key Information:

Green Park Village Primary Academy, a REAch2 school is opening in September 2020, starting our journey with our first cohort of 60 Reception children. The academy is a stunning and spacious brand new building at the heart of the new Green Park Development.

The school will grow year on year, each September taking in a new Reception cohort and moving gradually to full capacity from Nursery to Y6.

The school has designated space for a Nursery provision. This will be developed after opening to ensure that our core offer matches the needs of our families in our community.

The school plan to work with an external provider for before and after school child-care, if there is sufficient demand for this service from parents and carers.



# Head Teacher's Welcome

Thank you for expressing interest in Green Park Village Primary Academy, a free school part of REAch2 Academy Trust. I am proud to be appointed Head Teacher of Green Park Village Primary Academy by the DfE and REAch2 and to have the unique opportunity to create a wonderful school at the heart of a new community in Reading.



The Green Park Village Primary Academy staff team will work extremely hard for our families and will all wish to 'make a difference' to children's life experiences and enable our learners, of all abilities, to achieve.

Achieving academically and personally through experiencing a variety of meaningful learning experiences is our core aim so that children can 'Be the best they can be'. We will utilise all that our modern building, grounds and resources will offer- the children of Green Park Village Academy will be fortunate to have such a stunning school in which to grow and to learn. We wish to use and be part of innovative educational developments.

Green Park Village Primary Academy will put safety and wellbeing at the heart of all its practice. The strong pastoral care and bespoke provision for all learners will be successful in ensuring that children are and feel well nurtured, supported and safe in order to be able to achieve in learning.

We will expect every child to make good progress and to attain, so that they are ready for, and able to thrive in their next stage of education. In addition, there will be focus on the development of self-esteem and self-confidence, so that children feel confident to embrace opportunities that come their way in school and in their future lives.

Our vision statement will be: 'Enabling Excellence for Exceptional Futures'- all of us- children, staff and parents- working together for the best opportunities and experiences for the children in our school and community.

We will have uncompromising high expectations in all areas of our work in school, including around children's personal presentation, attendance and punctuality as children have one chance at their primary education and we wish for all the wonderful opportunities that we will offer to be utilised. We will be asking that all parents and carers work together with us as partners in aiming for the best for their child through supporting excellent attendance and reading with their child at home.

# Head Teacher's Welcome

“Our vision statement will be: ‘Enabling Excellence for Exceptional Futures’”



Our bespoke curriculum and basic skills focus (Literacy and Numeracy) will take account of our children's interests and experiences whilst developing skills for life and the application of these. Communication will be a key theme for us as a school providing our children with essential skills and enabling them to be able to express their feelings, opinions and ideas confidently and competently.

We will work together towards being an 'outstanding' school:

- Where all children consistently achieve of their best- no limiting factors;
- Where all children develop high self esteem and self confidence, being able to make informed choices and to have high aspirations for their futures;
- That reaches out to further support the needs of our evolving community.

Please contact myself and the REAch2 team directly if you wish for further information. We are very happy to help you. I look forward to meeting local children and families over the coming months as we prepare to open our wonderful school to our first cohort of children in September 2020.

Warm wishes,

Gemma Jackson  
**Head Teacher**

# Exceptional Opportunities for Learning as part of REAch2

We are proud to be part of REAch2, the largest primary only multi-academy trust in the UK.



## REAch2's Touchstones

We are proud to be part of REAch2, the largest primary only multi-academy trust in the UK.



The Cornerstone of REAch2 is a solid, unshakeable foundation, defined by exceptional teaching experiences and shared Touchstone values of learning, leadership, enjoyment, inclusion, inspiration, responsibility and integrity.

These values are at the very core of the Trust, firmly embedded in all of our academies and embraced by our leaders, teachers, staff, parents and children alike.

Strong family values are a key component of the REAch2 vision. We believe that REAch2 is a family: connected by a common desire to learn from each other, share experiences and be mutually supportive across the entire academy community. Every school and every individual is included in this vision. We actively encourage collaboration – and work as a team to create and deliver the best possible educational experiences for every pupil within the REAch2 Trust.

# Our Vision and Aims

## 'Enabling Excellence for Exceptional Futures'

We aim for learners to be exceptional as people and learners, ready for the next stage of their futures:

- Successful learners who enjoy learning, make progress and achieve;
- Confident individuals who are able to live safe, healthy and fulfilling lives;
- Responsible citizens who make a positive contribution to society.

# Our Vision and Aims

Linking in to our vision, our school's values will lie around the theme of 'GRIT'- aiming to be exceptional through passion and perseverance to long term goals. This is the aim of the school team working together for our children and will be our aims for the children- to be exceptional as people and in their lives.

At Green Park Village Primary Academy our GRIT core values, which will become the attitude of our school community:

- G**iving and gratitude
- R**esilience and readiness
- I**ntegrity and inspiration
- T**rust and teamwork

# Admissions

We will welcome new Reception age children (children turning 5 years old in the school year 1st September 2020 to August 31st 2021) into our stunning school from September 2020.

As an Academy we are our own Admissions Body, however we use Reading Council to direct new children to us.

If you wish to attend Green Park Village Primary Academy, please contact and apply to

Admissions directly via:  
<https://brighterfuturesforchildren.org/schools/admissions/primary/>

This website gives all information and below is a summary of the timescales for Admissions:

## Timetable for applications

Guide for Parents and Carers made available on Brighter Futures for Children website	By 12 September 2019
Reading Parents/Carers to receive application information (if they attend a Reading nursery/pre-school/ childminder)	By 12 November 2019
Online admissions site open	12 November 2019 – 15 January 2020
Closing date for applications	15 January 2020
National Offer Day for on time Applications – offer letters posted to Reading residents. Online applicants can view outcome of application. NB. letters are sent by 2nd Class post	16 April 2020
Deadline for parents to accept	30 April 2020
Late applications processed	From 1 May 2020
Closing date for receipt of appeals	15 May 2020
Appeals to be heard if submitted by 15 May 2020	June – July 2020
Admissions round ends	31st August 2020

Please see our website and the Admissions Brochure for a full copy of our Admissions Policy.

If you require any support, please email [info@reach2.org](mailto:info@reach2.org) and we will be very happy to guide you in the process of making an application.



Green Park Village Primary Academy, Longwater Avenue, Green Park, Reading, RG2 6AB

01283 246433 [info@reach2.org](mailto:info@reach2.org) [@reach2trust](https://www.facebook.com/reach2trust)

[WWW.GREENPARKVILLAGEACADEMY.ORG](http://WWW.GREENPARKVILLAGEACADEMY.ORG)

# Early Years at Green Park Village Primary Academy

Early childhood is the foundation on which children build the rest of their lives. At Green Park Village Primary Academy we greatly value the important role that the Early Years Foundation Stage (EYFS) plays in laying secure foundations for future learning and development, however we also believe early childhood is valid in itself, as part of life.

It is important to view the EYFS as preparation for life and not simply preparation for the next stage of education. The EYFS applies to children from birth to the end of the Reception year. At Green Park Village Primary Academy, initially the EYFS applies to children joining us at the beginning of the school year in which they are five.

## The Curriculum

At Green Park Village we will take every opportunity to ensure that our bespoke curriculum provides the basis and foundations to support all children to feel the confidence to take on new learning experiences, to link their prior knowledge and to become agents of their own learning, both in school and beyond as they grow into citizens of their community.

Our Early Years curriculum is carefully structured to provide opportunities for children to learn through planned, purposeful play in all areas of learning and development in the indoor and outdoor environment. Some learning is led by adults and some by the children themselves. Appropriate intervention by specialist practitioners supports children to engage in the learning process and extend their learning.

Our curriculum enables children to learn and develop skills, attitudes and understanding in these areas of learning. The principles of learning in EYFS inform the whole school vision for learning at Green Park Village Primary Academy.



# Early Years at Green Park Village Primary Academy

## The Prime Areas

- Communication and Language
- Physical Development
- Personal, social and Emotional Development

## The Specific areas

- Literacy
- Mathematics
- Understanding the world
- Expressive Arts and Design

Achievement of these prime and specific areas of learning is by:

- Playing and exploring
- Active learning
- Creating and thinking critically

## The Learning Environment as a teacher

We recognise that the environment plays a key role in supporting and extending the children's development and that the use of resources and the environment needs to be carefully planned. We have beautiful and spacious grounds and stunning purpose build school building, with a range of resources and equipment for the children to access in their learning. We aim to create an attractive, welcoming and stimulating learning environment which will encourage children to explore, investigate and learn through first-hand experience. We also aim to make it a place where children feel secure and confident, and are challenged to develop their independence. Children will have the freedom to move between the indoor and outdoor learning environment throughout the school day.

### We will aim for the children to be:

Making choices about their learning and working both independently and collaboratively;

Actively involved and engaged in their own learning journey;

Investigators and explorers with their learning environments, developing new skills and building knowledge;

Communicating what they have learned and communicating effectively with others;

Thriving and making excellent progress from their starting points.

### The role of adults:

Skilled adults will work as learning partner and learning provocateur with the children, moving children's learning forward by listening, recording, observing and eliciting.

Each child will have their own Key Worker and all practice will be overseen by the Early Years Leader.



 Green Park Village Primary Academy, Longwater Avenue, Green Park, Reading, RG2 6AB

 01283 246433  [info@reach2.org](mailto:info@reach2.org)  [@reach2trust](https://twitter.com/reach2trust)

[WWW.GREENPARKVILLAGEACADEMY.ORG](http://WWW.GREENPARKVILLAGEACADEMY.ORG)